

Examine Help



- [Introduction](#)
- [Menu Commands](#)
- [Search Window](#)
- [Viewing Window](#)
- [SpeedBar](#)
- [GREP regular expressions](#)
- [Registration](#)
- [Error Messages](#)

Introduction

Examine is a fast and versatile text search utility for Microsoft Windows v3.1 with the following features:

- > It can search both text and binary files. The text files can have MS DOS, Macintosh or UNIX line endings. It also supports the formats of Microsoft Windows Write and Rich Text Format (RTF) while other formats are treated as binary files.
- > GREP regular expressions can be used in the search.
- > The search can be started from any directory, with subdirectories being optionally searched, or alternatively multiple drives can be searched either on the same machine or across networks. The files to be searched are selected using any combination of DOS file specifications.
- > Files selected in the File Manager can be searched by dragging and dropping them into Examine.
- > The search data can be saved to disk or printed and can be displayed on the screen in a fully configurable manner.
- > The program is fully multitasking and can carry out its searches in the background.
- > For faster access to certain commands you can use the SpeedBar.
- > Text from the viewing window can be copied to the Clipboard.
- > Files compressed by Microsofts Compress utility can be searched.

This copy of Examine is shareware. Shareware is a concept that allows users to assess software before buying it which benefits the user but the concept depends on your support. This program can be freely copied for the purpose of evaluation. However this program is **not** free and must be registered after an evaluation period of 30 days or its use be discontinued. Registration.

Menu Commands

Examine uses context sensitive help for its menus. To obtain help on any menu command select it with the keyboard or with the mouse keeping the left button pressed down. Press F1 and if using a mouse release the left button. Help will then be loaded displaying the relevant help topic.



Search Window

The Search Window displays the results of a search. The file name and details are listed followed by the lines where matches have been found. The matches are highlighted by default as bold blue text but this can be changed by the Colours command. For text files the line numbers can be displayed while for binary files the hexadecimal address is shown.

To view a file containing a match, either select the filename or match of interest with the left mouse button and use the View or Launch button on the SpeedBar, or double click directly on the relevant line with the left mouse button. If you double click on the relevant line, the file will be displayed using either the internal viewer or the associated application depending on which option you have selected with the View files with menu command. The View button on the SpeedBar views the file with the internal viewer while the Launch button loads the file with its associated application. By using the internal viewer, the match selected will be immediately displayed in the viewing window.

When a search window is active the status bar will indicate the total number of matches.



Viewing Window

The Viewing Window displays a file where matches, highlighted by default as bold blue text, have been found. The default highlighting can be changed by the Colours command. To jump between matches use either the SpeedBar, the Next and Previous menu commands or the < and > keys. For text files the line numbers can be displayed while for binary files the hexadecimal address is shown.

To copy text from the viewing window to the clipboard, text is selected using the mouse. A single line of text is selected with a single click on the relevant line with the left mouse button. Blocks of text can be selected either by dragging the mouse with the left button depressed or by selecting the first line with a single click and the last line with a single click and the shift key depressed. The selected text can then be copied to the clipboard using the Copy command or Ctrl + C.

When a viewing window is active the status bar will indicate the total number of pages produced if the file is sent to the printer.

SpeedBar

The SpeedBar is a row of buttons that represent mouse commands. Clicking on one of the buttons is quicker than selecting the command from the menu. If you do not want the SpeedBar present then you can hide it by using the SpeedBar menu command.

For help on a SpeedBar button when running the program you can move the mouse cursor to the button of interest and a SpeedBar tip will appear with a very brief description of the button's action. To turn this facility off use the Tips menu command.

For full details of the action of each button click on the button of interest below.



Drag and Drop

Examine can make full use of the drag and drop features of the File Manager. Select any files in the File Manager and drag and drop them into Examine where the drag and drop search dialog box will be opened up.

Microsoft File Compression

Files compressed by Microsoft's file compression utility can be expanded and searched by Examine. Such compressed files can be found on setup disks and have file extensions ending with `_`. For instance a file such as `README.TXT` will have the name `README.TXT_` once it has been compressed. Examine automatically checks to see if a file has been compressed by this utility and will expand it if this is the case. If a file has been compressed by any other utility then it will not be expanded and will be treated as an ordinary binary file.

Regular Expressions

Regular expressions are derived from the UNIX utility GREP and enable powerful text searches to be carried out using the special characters `^`, `$`, `.`, `*`, `+`, `-`, `[]`, `[^]`, `[-]`, and `\`. These characters have the following meanings:

- `^` At the beginning of a line a circumflex matches the start of a line. For instance `^while` will find all lines starting with **while**.
- `$` At the end of a line a dollar matches the end of a line. For instance `tomorrow$` will find all lines ending with **tomorrow**.
- `*` An asterisk after a character will match zero or more occurrences of that character. For instance `to*` will match **t**, **to**, and **too**.
- `+` A plus sign after a character will match one or more occurrences of that character. For instance `to+` will match **to** and **too**.
- `-` A minus sign after a character will match zero or one occurrence of that character. For instance `to-` will match **t** and **to**.
- `.` A period matches any character. For instance `p.n` will match **pan**, **pen**, **pin** and **pun**.
- `[]` Characters in square brackets will match any one of the enclosed characters. For instance `p[aei]n` will match **pan**, **pen**, **pin** but not **pun**.
- `[^]` A circumflex at the start of an expression within brackets will match any character except one of the enclosed characters. For instance `p[^aei]n` will match **pun** but not **pan**, **pen** or **pin**.
- `[-]` A hyphen within brackets indicates a range of characters. For instance `p[a-h]n` will match **pan** and **pen** but not **pin** or **pun**.
- `\` A backslash before any of the above special characters treats that character literally. For instance `\.` will be treated as a period rather than as any character.

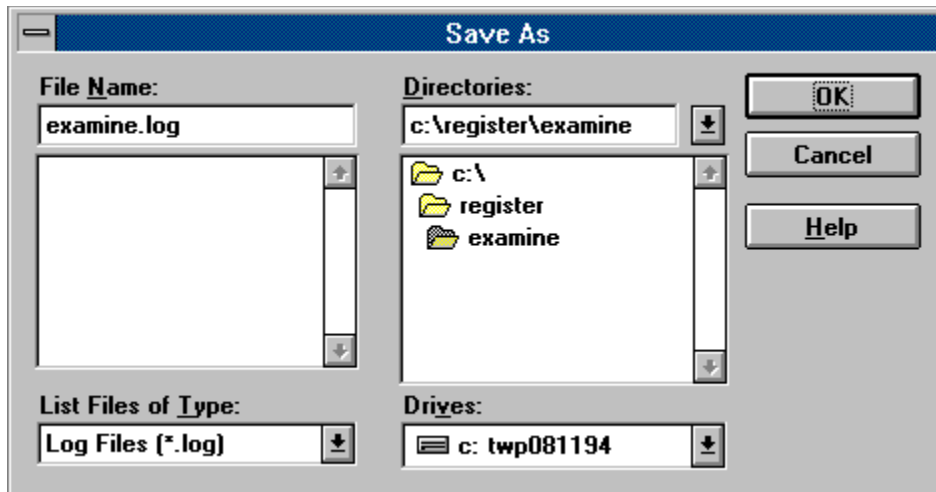
Within square brackets the special characters `$`, `.`, `*` and `+` are treated literally while `^` is only treated as a special character if it immediately follows a `[`.

Further Examples

- `colou-r` will match **color** and **colour**.
- `p[a-k]+n` will match **pan**, **pen**, **pin** and **pain**.
- `th.*y` will match **thy**, **they** and **theoretically**

Save As Dialog Box

This enables you to save your search data to a specified file. Click on the dialog box area that you need help on.



Filename

Enter your filename here. The default filename is EXAMINE.LOG.

Files

The files in the current directory of the type selected in the List Files of Type area are shown here. If you want to save the search data using an existing filename then you can select the filename from the list. The original file will be overwritten.

Directory

The currently selected directory is shown here. You can directly type in a directory name or previous directories can be retrieved from the history list by using the mouse or the DOWN and ALT - DOWN keys.

Drives

Available drives are listed here and your systems current drive is shown.

List Files of Type

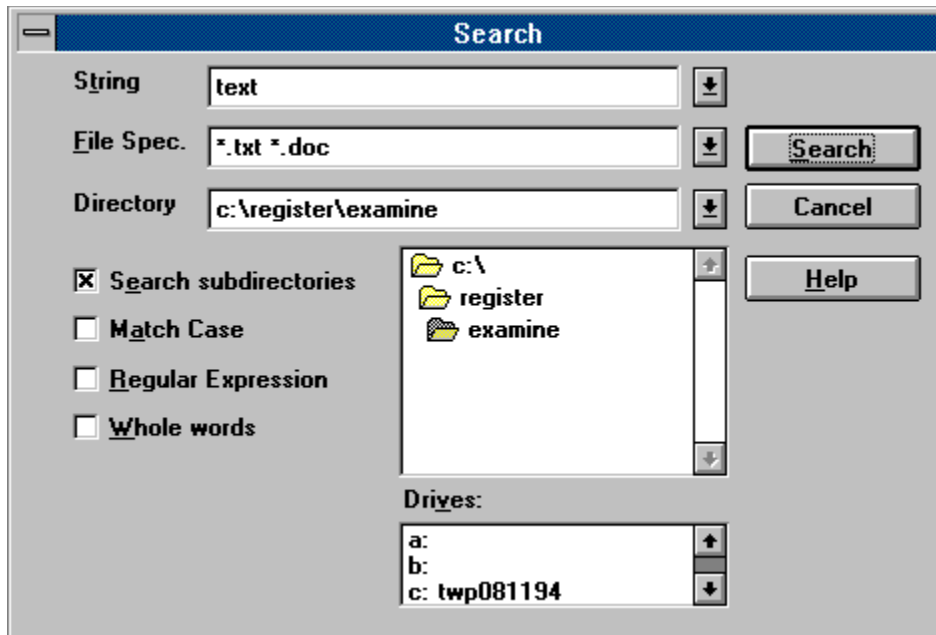
This specifies which files are listed in the files area. The current type of file and its extension are displayed.

OK

This button will cause the search data to be saved using the given filename. If the filename already exists you will be asked whether you want to overwrite the original file.

Search Dialog Box

This enables you to specify your search parameters. For multiple disk searches you can use the list of drives to select your requirements while for directory searches you can use both the list of directories and the list of drives if necessary. Alternatively you can type in your directory or list of drives into the Directory/Drives edit box directly or select a previous entry from the history list. Click on the dialog box area that you need help on.



Search Dialog Box (Drag and Drop)

This enables you to specify your search parameters. Click on the dialog box area that you need help on.



The image shows a standard Windows-style dialog box titled "Search". It features a text input field containing the word "text". To the right of the input field is a small icon of a downward-pointing arrow. Below the input field are three unchecked checkboxes: "Match Case", "Regular Expression", and "Whole words". On the right side of the dialog, there are three buttons: "Search", "Cancel", and "Help". The "Search" button is highlighted with a dashed border, indicating it is the current focus.

String

Enter your search string here. The string is treated as a regular expression if the Regular Expression option is selected. Previous search strings can be retrieved from the history list by using the DOWN and ALT - DOWN keys or the mouse.

File Spec.

Enter your file specification here. You can use any DOS wildcards in your specification and you can use more than one specification if it is separated by a space. Previous file specifications can be retrieved from the history list by using the DOWN and ALT - DOWN keys or the mouse.

Examples

readme.txt	Search readme.txt
.	Search all files
*.txt *.doc	Search all files with the .txt and .doc extension.

Directory/ Drives

Either the currently selected directory is shown here or if you have selected one or more drives to be searched then these will be shown. You can also directly type in a directory name or a list of drives. If you enter a list of drive names then these must be separated by a space i.e. **a: b: c:**. Previous directories or drive lists can be retrieved from the history list by using the mouse or the DOWN and ALT - DOWN keys.

Directories

Directories are listed here. To change your current directory double click on your selection.

Search subdirectories

This enables the program to search all the subdirectories of the current directory. If the current directory is the root directory all directories on the disk will be searched. If this option is not selected only the current directory will be searched.

Match Case

This makes the search case sensitive.

Regular Expression

This makes the program treat the search string as a regular expression.

Whole words

This makes the program search for whole words only.

Drives

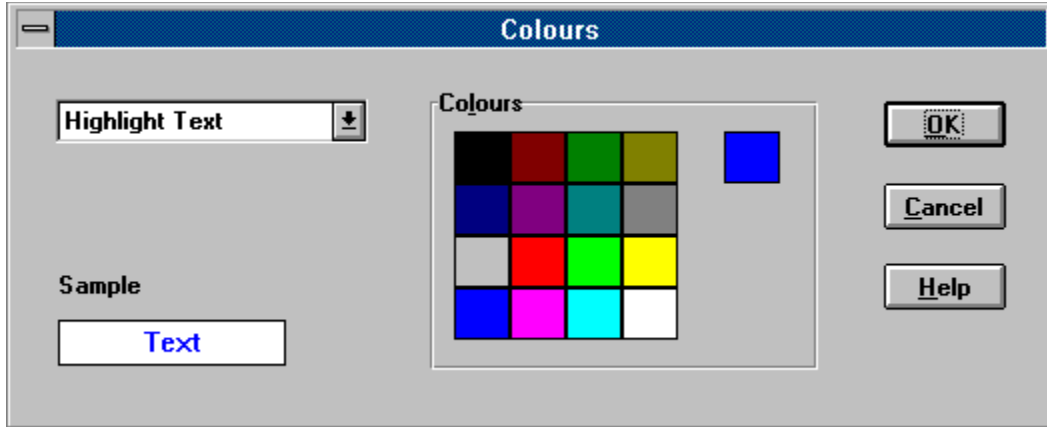
Available drives are listed here. To change drive double click on your selection. If you want to search across one or more drives then click once on the required drive. You can use the shift and control keys with the mouse to quickly select a number of drives.

Search

This button starts the search.

Colour Dialog Box

This enables you to specify the colours of your matched text. Click on the dialog box area that you need help on.



Text Element

Here you can select the text element that you would like to change the colour of.

Palette

Here you can select the colour for your chosen text element by clicking once with the mouse. The colour chosen will be displayed and the sample text will change to show you how your selection looks.

Colour

This shows the currently selected colour of the text element.

Sample

This shows some sample text in the colours you have selected.

OK

This button causes the search text in all current windows to be changed to the new colours you have selected.

Cancel

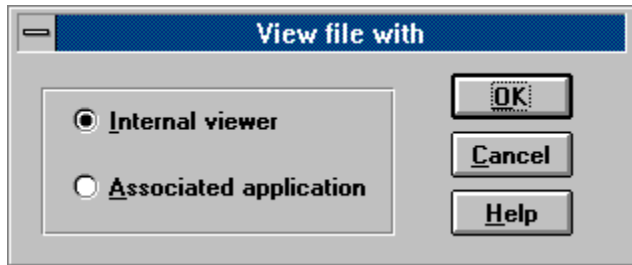
This button cancels the dialog box

Help

This button produces the current help screen.

View file with Dialog Box

This enables you to choose between viewing files with the programs internal viewer or viewing files with their associated application when double clicking with the left mouse button on the Search Window. For more information on these options click on the relevant area below.



Internal Viewer

The internal viewer enables the program to view files selected from the search data with its own viewer. This can view files up to 1 Mb in size and can display line numbers/ hexadecimal addresses if desired.

Associated Application

The Associated Application option enables the program to view selected files with the application associated with each particular file extension as set by the File Manager. For instance selecting a file with the extension .WRI will cause the file to be loaded with Microsoft Write if you are still using the File Manager default for this extension.

OK

This confirms your selection.

Context Sensitive Help

Displays this help file at a page relevant to the window currently active.

View command

The View command executed from the SpeedBar will create a Viewing Window displaying the contents of the selected file using the internal viewer.

Launch command

The Launch command executed from the SpeedBar will load the file with its associated application.

Registration Form

Examine v1.40, Copyright © Aquila Software, 1993-1996

This form can be sent to your printer using the File | Print Topic command. Users in the U. S. who want to pay in U.S. Dollars should ignore this form and follow the instructions in U. S. registrations. For details about site licenses write to the address below for pricing details.

_____ copies of **Examine** at **£10** (10 pounds sterling) each _____

Shipping and handling charge of **£2** for orders outside Europe _____

Total _____

Send your cheque/ Eurocheque/ postal order/ money order for the above total, made payable to "Aquila Software", to:

Aquila Software,
P O Box 137,
Tunbridge Wells,
Kent,
TN4 0YN,
United Kingdom.

Name: _____

Address: _____

Town/City: _____

County/State: _____

Country: _____

Postal/Zip Code: _____

Telephone: _____

Disk Size: [] 3.5" [] 5.25"

Where did you obtain Examine?

Comments: _____

U. S. Registrations

To register Examine in the U. S. please do the following:

- 1) At your local Post Office ask for an authorisation to issue an International Money Order for **\$20**.
- 2) Put your own name and full address on the front of the form.
- 3) On the back of the form put the following in the Payee's box

Trevor Poile,
Aquila Software,
(EXAMINE 3) **or** (EXAMINE 5)
PO Box 137,
Tunbridge Wells,
Kent TN4 0YN,
United Kingdom.

The part in brackets is important as it lets me know what program you are registering and your preferred disk size. Alternatively the part in brackets can be entered as the 'purpose' on the money order.

- 4) Mail the completed form to

International Money Orders,
Box 14964,
St. Louis,
MO 63182 - 9421

The money will be converted to U. K. pounds and sent to me. On receipt of your money I will immediately send you your registered version of Examine.

Write EXAMINE 5 if you want to be sent your registered version on a 5.25" disk.

Write EXAMINE 3 if you want to be sent your registered version on a 3.5" disk.

Error Messages

Out of memory

Too many lines for window

No association exists for this file

<File Spec> is not a valid file specification

<Dir Spec> does not exist

<Drive Spec> are not valid drives

No files found

No matches found

Too much text selected for copying

Not enough disk space to complete this operation

GREP errors

No string or expression given

Invalid use of '\'

Invalid use of '^'

Invalid use of '\$'

Invalid use of '*'

Invalid use of '+'

Invalid use of '-'

Invalid use of ']'

Invalid use of '[' or missing ']'

Empty set

Invalid range in set

Expression not sufficiently specific

Out of memory

Windows has no more available memory. To make more memory available either close some windows in Examine or close another application. If this error occurs while using the internal viewer then less memory may be used if you launch the file with its associated application.

Too many lines for window

Currently each Examine window can have up to 16256 lines thus restricting the number of possible searches to be logged in one search to 16255. To overcome this problem you could restrict your search criteria either by using a more restrictive search string or by searching fewer files.

No association exists for this file

There exists no associated application for the file extension of the file you want to view. To change this you must load File Manager and use its facilities to make an association.

No files found

There were no files found that matched your file specification(s).

No matches found

There were no matches found between your search string or regular expression and your selected files.

<File Spec> is not a valid file specification

The file specification is not valid. You can use any DOS wildcards in your specification and you can use more than one specification if it is separated by a space.

Examples

readme.txt	Search readme.txt
.	Search all files
*.txt *.doc	Search all files with the .txt and .doc extension.

<Dir Spec> does not exist

The directory selected does not exist. Either you have mistyped the directory name or if you have selected the directory from the history list it no longer exists. To select a current directory you can use the box provided in the dialog box.

<Drive Spec> are not valid drives

The list of drives is not valid. DOS only recognises drive names from a: to z:. To search more than one drive the drive names must be separated by a space. To select some or all of the drives currently on your system you can use the list of drives provided in the dialog box.

Examples

a: Searches the drive a:
a: b: c: Search the drives a:, b: and c:.

Too much text selected for copying

Currently Examine can only copy less than 64K of text to the Clipboard. The text you have selected exceeds this limit and you should reduce the amount text that you have selected and try again.

Not enough disk space to complete this operation.

This error occurs if you try to save data to disk and there is insufficient space. You have no option but to abort and to release some space on your disk by deleting some non essential files, if you want to save your data.

No string or expression given

No string or regular expression has been given to be searched for.

Invalid use of '\'

The character \ has been incorrectly used in the regular expression. In a regular expression \ must be followed by another character which is then treated literally. To search for \ in a regular expression you must use \\.

Examples

\	Error!
Text\	Error!
\\	will search for \.
Text\\	will search for Text\

Invalid use of '^'

The character ^ has been incorrectly used in the regular expression. In a regular expression ^ must either:

- Be the first character where it represents the start of a line
- Follow a [where it alters the meaning of the enclosed set

To search for ^ in a regular expression you must use \^.

Examples

Te^xt	Error!
^	Error!
\^	will search for ^.
^Text	will search for Text at the beginning of a line

Invalid use of '\$'

The character **\$** has been incorrectly used in the regular expression. In a regular expression **\$** must be the last character where it represents the end of a line

To search for **\$** in a regular expression you must use **\\$**.

Examples

Te\$xt	Error!
\$	Error!
\\$	will search for \$.
Text\$	will search for Text at the end of a line

Invalid use of '*'

The character * has been incorrectly used in the regular expression. To search for * in a regular expression you must use *.

Examples

*	Error!
*	will search for *.

Invalid use of '+'

The character + has been incorrectly used in the regular expression. To search for + in a regular expression you must use \+.

Examples

+	Error!
\+	will search for +.

Invalid use of '-'

The character - has been incorrectly used in the regular expression. To search for - in a regular expression you must use \-.

Examples

-	Error!
\-	will search for -.

Invalid use of ']'

The character **]** has been incorrectly used in the regular expression. In a regular expression **]** is used with **[** to define a set or range characters to be matched. To search for **]** in a regular expression you must use **\]**.

Examples

Te]xt	Error!
]	Error!
\]	will search for] .
[aei]	will match a , e or i .

Invalid use of '[' or missing ']'

The character `[` has been incorrectly used in the regular expression. In a regular expression `[` is used with `]` to define a set or range characters to be matched. To search for `[` in a regular expression you must use `\[`.

Examples

Text	Error!
<code>[</code>	Error!
<code>\[</code>	will search for <code>[</code> .
<code>[aei]</code>	will match a , e or i .

Empty set

An empty set has been used in the regular expression.

Examples

<code>[]</code>	Error!
<code>[^]</code>	Error!
<code>[aei]</code>	will match a , e or i .
<code>[^aei]</code>	will match any character except a , e or i .

Invalid range in set

An invalid range has been used in the regular expression. A range must be specified in ascending order.

Examples

[z-a]	Error!
[9-0]	Error!
[a-z]	will match characters a to z
[0-9]	will match characters 0 to 9 .

Expression not sufficiently specific

This error occurs if the regular expression given is likely to match all or most of the characters in any given file. For instance the use of `.` to match any character on its own will match everything in a file except a new line character.

Examples

<code>.</code>	Error!
<code>.+</code>	Error!
<code>.*</code>	Error!
<code>.-</code>	Error!
<code>.a</code>	OK

Search command (File menu)

The Search command opens up the Search Dialog Box where you can specify your search parameters.

Save As command (File menu)

The Save As command opens up the Save As Dialog Box where you specify the filename and directory for your search data to be saved to. The default filename is EXAMINE.LOG.

Print command (File menu)

The Print command sends the search data to your printer.

Printer Setup command (File menu)

The Printer Setup command enables you to configure your printer.

Exit command (File menu)

The Exit command enables you to leave Examine.

Copy command (Edit menu)

The Copy command copies the selected text and places an exact copy of it in the Clipboard.

Line Numbers command (Options menu)

The Line Numbers command selects whether or not you have line numbers displayed with your search data and files opened with the internal viewer. With binary data the hexadecimal address is displayed.

Fonts command (Options menu)

The Fonts command opens up the Fonts Dialog box where you can select both font and font size.

Colours command (Options menu)

The Colours command opens up the Colours Dialog Box where you can select both text and background colour.

View Files With command (Options menu)

The View files with command opens up the View files with Dialog Box which allows you to choose how you would like to view files.

SpeedBar command (Options menu)

The SpeedBar command either hides or reveals the SpeedBar.

Tips command (Options menu)

The Tips command either disables or enables the SpeedBar tips.

Next command (Find menu) >

The Next command moves the Viewing Window to the next match in the active file.

Previous command **(Find menu)** <

The Previous command moves the Viewing Window to the previous match in the active file.

Cascade command (Window menu) Shift + F5

The Cascade command resizes all the windows to the same size and arranges them in an overlapping pattern so that their title bars are visible.

Tile command (Window menu) Shift + F4

The Tile command resizes all the windows so that they are side by side and none of them overlap.

Arrange Icons command (Window menu)

The Arrange Icons command arranges all the icons into a row starting from the lower left corner.

Close All command (Window menu)

The Close All command closes all the windows currently open in the program.

List of Open Windows

The list of open windows at the bottom of the Window menu provides another way of switching to another window from the currently active one. Just select your choice.

Index command (Help menu) Shift + F1

The Index command loads this help file at its contents page.

Using Help command (Help menu)

The Using Help command loads Windows own help file on how to use Help.

Registration command (Help menu)

The Registration command loads help displaying the registration information.

About command (Help menu)

The About command opens up the about dialog box which shows the version number and registration status of the program.

